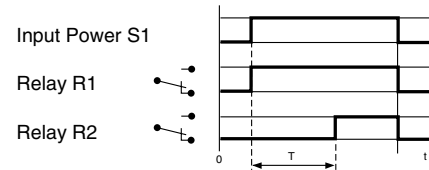
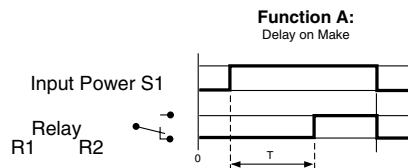


# AXR2 SERIES

## DELAY ON MAKE TIMER

UL listed CSA recognized

- **DIN-Sized (48 x 48mm) Housing**
- **2 Delayed SPDT or 1 Delayed SPDT and 1 instantaneous SPDT**
- **Multi-timing Range (.1 sec to 10 hours in one unit)**
- **LED Power ON**
- **LED Relay Indicator**



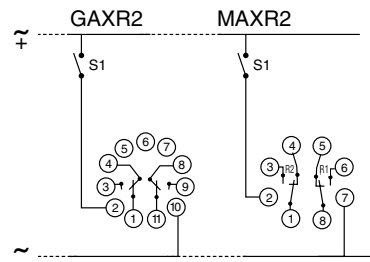
When input power (S1) is applied, the relay delays the preset time (T) period prior to energizing. Interrupt power to de-energize the relay. Timer is supplied with a red LED relay status indicator.

When input power (S1) is applied, relay R1 energizes immediately. Relay R2 energizes after the delay period selected. interrupt input power to repeat the cycle.

**SPECIFICATIONS:**

|                                       |   |
|---------------------------------------|---|
| <b>Input Power</b> .....              | 12 VDC, 24 VAC-DC, 48 VAC-DC,<br>24 VAC-DC/110 VAC, 24 VAC-DC/<br>220-240 VAC ±15%, 50/60 Hz  |
| <b>Power consumption</b> .....        | 24 VAC: 1.0 VA                      12 VDC: 0.5 W<br>48 VAC: 1.2 VA                      24 VDC: 0.6 W<br>110 VAC: 3.5 VA                      48 VDC: 1.2 W<br>220 VAC: 7.0 VA |
| <b>Output Rating</b> .....            | 2 x SPDT Relay  |
| <b>Contact material</b> .....         | AgCdO   |
| <b>Maximum loading</b> .....          | 10 Amp                                      8A DC   |
| <b>Maximum switching voltage</b> ..   | 250 VAC                                      250 VDC  |
| <b>Relay max. power rating</b> .....  | 1250 VA                                      80W  |
| <b>Transient protection</b> .....     | 2500 volts  |
| <b>Electrical life of relay</b> ..... | 10 <sup>5</sup> operations at 1250 VA resistive load  |
| <b>Mechanical life of relay</b> ..... | 5 x 10 <sup>7</sup> operations<br>±3% with temp. variation  |
| <b>Repetition accuracy</b> .....      | ±0.5% at a constant ambient   |
| <b>Reset time</b> .....               | 50 ms after timing<br>100 ms during timing  |
| <b>Operating temperature</b> .....    | +14°F to +140°F                      -10°C to +60°C   |
| <b>Humidity</b> .....                 | 85% non-condensing  |
| <b>Weight</b> .....                   | 3.5 oz. (100g)  |

**WIRING DIAGRAM:**

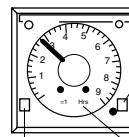


The AXR2 Series is dual voltage timer, Jumper terminals 10 to 7 (GAXR2) when using 24VAC/DC input power-MAXR2 is single voltage.

**TIMING RANGE SELECTION:**

Time Base Selection Switch  
:Hour, Minute, Second

Six Time Ranges can be selected with two front panel switches.



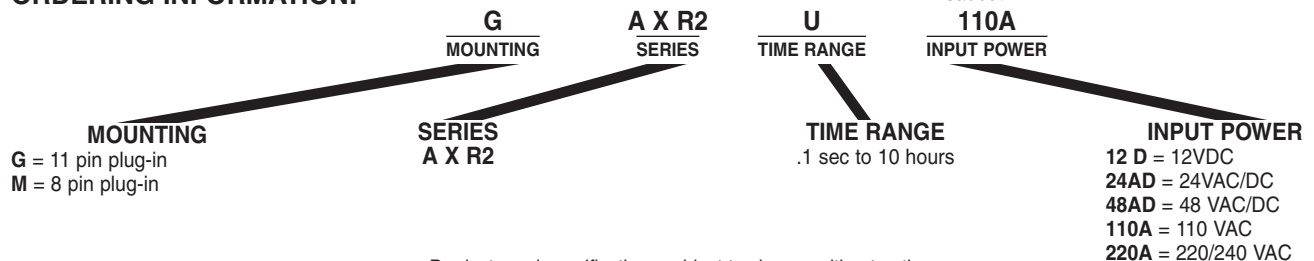
Scale Selection Switch: x1, x0.1

Time Base Readout

Six Time Range can be selected with two front panel switches.

- X 0.1 s — 0.1 to 1 second
- X 1 s — 1 to 10 seconds
- X 0.1 mn — 0.1 to 1 minute
- X 1 mn — 1 to 10 minutes
- X 0.1 hrs — 0.1 to 1 hour
- X 1 hrs — 1 to 10 hours

**ORDERING INFORMATION:**



Products and specifications subject to change without notice.  
Consult factory for application assistance.