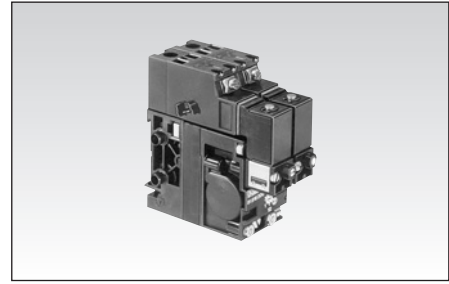
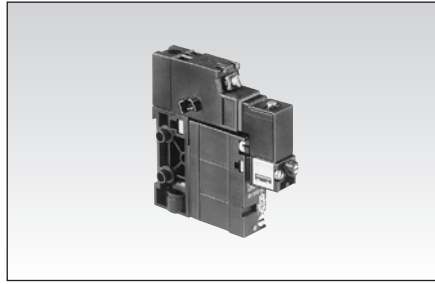


# Electro-pneumatic miniature valves

## Pre-assembled



### Part numbers

| Function   | 3/2 NC poppet                                 | 4/2 poppet                                    | 4/2 slide                                     | 4/2 slide                              |
|--|---|---|---|--|
| Sub-base with push-in connection for semi-rigid tubing (NFE 49100) | 5/32" O.D. (Ø 4) ext.                         | 5/32" O.D. (Ø 4) ext.                         | 5/32" O.D. (Ø 4) ext.                         | 5/32" O.D. (Ø 4) ext.                  |
| Version  | Solenoid valve with momentary manual override | Solenoid valve with momentary manual override | Solenoid valve with momentary manual override | Solenoid valve without manual override |
| Voltage  | 24 Vdc (+10% -15%)                            | 24 Vdc (+10% -15%)                            | 24 Vdc (+10% -15%)                            | 24 Vdc (+10% -15%)                     |
|  | <b>81 513 103</b>                             | <b>81 513 203</b>                             | <b>81 516 222</b>                             | <b>81 516 212</b>                      |

**1**

### Symbol

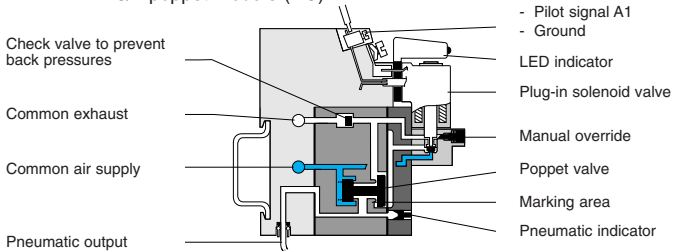


### Characteristics

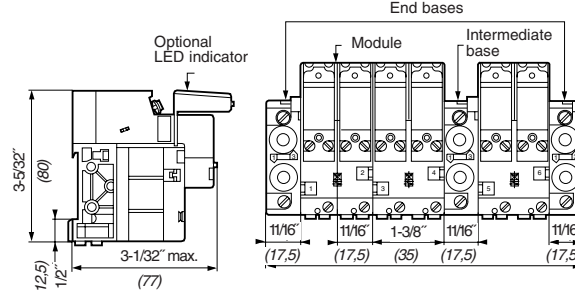
|   |              |                            |                            |                            |                            |
|---|--------------|----------------------------|----------------------------|----------------------------|----------------------------|
| Operating pressure  | psi (bars)   | 45 > 120 (3 > 8)           | 45 > 120 (3 > 8)           | 45 > 120 (3 > 8)           | 45 > 120 (3 > 8)           |
| Orifice diameter  | inch (mm)    | 1/8" (3)                   | 1/8" (3)                   | 5/32" (4)                  | 5/32" (4)                  |
| Flow at sub-base 81 513 060   | cfm (NL/min) | 7 (200)                    | 7 (200)                    | —                          | —                          |
| 90 psi (6 bars) sub-base 81 517 101   | cfm (NL/min) | —                          | —                          | 10.5 (300)                 | 10.5 (300)                 |
| Cv (kV) with sub-base 81 513 060  | cfm (NL/min) | .15 (2.2)                  | .15 (2.2)                  | —                          | —                          |
| with sub-base 81 517 101  | cfm (NL/min) | —                          | —                          | .28 (4)                    | .28 (4)                    |
| Operating temperature   | °F (°C)      | +15 > +120 (-10 > +50)     | +15 > +120 (-10 > +50)     | +15 > +120 (-10 > +50)     | +15 > +120 (-10 > +50)     |
| Switching time of the assembly (milliseconds)   |              | 20                         | 20                         | 25                         | 25                         |
| Mechanical life (operations) at 60 psi (4 bars)   |              | 15 million                 | 15 million                 | 10 million                 | 10 million                 |
| Valve position will be maintained in the event of pressure loss and/or electrical current loss. |              | —                          | —                          | •                          | •                          |
| Mounting  |              | DIN rail 35 mm<br>EN 50022 | DIN rail 35 mm<br>EN 50022 | DIN rail 35 mm<br>EN 50022 | DIN rail 35 mm<br>EN 50022 |
| Weight (grams)  |              | 130                        | 130                        | 290                        | 290                        |
| UL and cUL approval   |              | MH15085                    | MH15085                    | MH15085                    | MH15085                    |

### Principle of operation

#### 3/2 poppet module (NC)

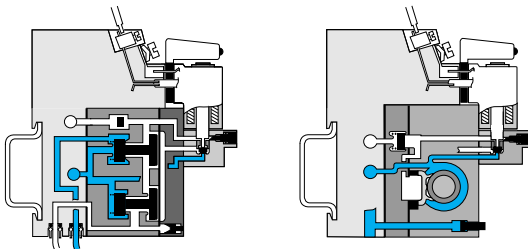


### Dimensions



#### 4/2 poppet module

#### 4/2 slide module



End bases not supplied (page 5/9)  
Intermediate bases not supplied (page 5/9)  
Indicators not supplied (page 5/11)

use (metric) dimensions for critical data

| Other information | To order, specify :   |
|-------------------|---|
|                   | <p>Standard products, non stocked</p> <p><b>1</b> Part number<br/>Example : Electro-pneumatic module interface - 81 513 103</p> |

Products and specifications subject to change without notice.  
Consult factory for application assistance.

204 Airline Drive, Suite 300, Coppell, Texas 75019 / Tel: (888) 778-2733 / FAX: (888) 329-9773 / www.crouzet-usa.com