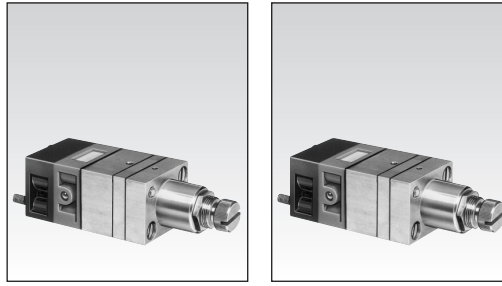


# Adjustable pressure switches (manostats)



Counter balance leakage

Yes

Yes

## Part numbers (and adjustment ranges)

Adjustment range	0.7 to 8 psi (50 to 500 mb) 2 to 35 psi (0.1 to 2.5 b) 30 to 120 psi (2 to 8 b)	<b>81 505 140</b> <b>81 505 150</b> <b>81 505 160</b>	<b>81 502 140</b> <b>81 502 150</b> <b>81 502 160</b>	
Version		Positive output (N.C.)	Negative output (N.O.)	
Accuracy	0.7 to 8 psi (50 to 500 mb) 2 to 35 psi (0.1 to 2.5 b) 30 to 120 psi (2 to 8 b)	10 % 4 % 4 %	10 % 4 % 4 %	

1

## Symbol

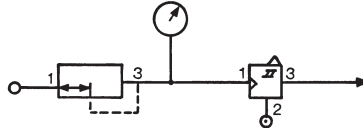


## Characteristics

Orifice diameter	inches (mm)	0.1 (2.5)	0.1 (2.5)	
Flow at 90 psi (6 bars)	cfm (NL/min)	6 (170)	6 (170)	
Hysteresis	0.7 to 8 psi (50 to 500 mb)	0.9 (60 mb)	0.9 (60 mb)	
	2 to 35 psi (0.1 to 2.5 b)	1.5 (100 mb)	1.5 (100 mb)	
	30 to 120 psi (2 to 8 b)	5 (320 mb)	5 (320 mb)	
Connection - sub-base page 4/14-4/15				
Operating temperature	°F (°C)	+20 > +120 (-5 > +50)	+20 > +120 (-5 > +50)	
Mechanical life	operations	3 Million	3 Million	
Weight	grams	160	160	
Relay color		Light gray	Yellow	

## Connections

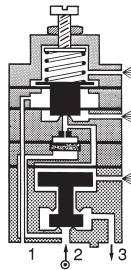
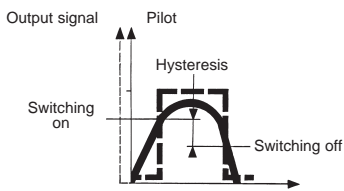
Example of pressure threshold adjustment (mini-regulator - manostat)



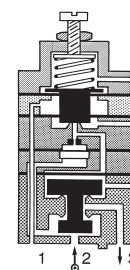
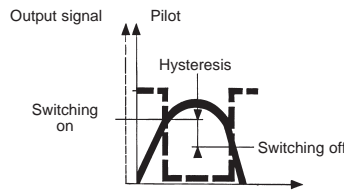
## Principle of operation

The manostats provide an on or off output signal when the input signal reaches a predetermined pressure threshold.

### Positive output (N.C.)

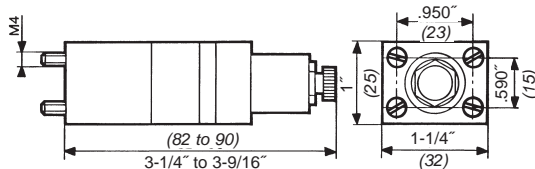


### Negative output (N.O.)



## Dimensions

81 502 140 - 81 502 150 - 81 502 160  
81 505 140 - 81 505 150 - 81 505 160



Use (metric) dimensions for critical data

## Other information

Pressure switches with electrical output on request.

## To order, specify :

Standard products

Standard products, non stocked

1

Part number

Example : Adjustable pressure switches (manostats) - 81 505 140

Products and specifications subject to change without notice.

Consult factory for application assistance.

204 Airline Drive, Suite 300, Coppell, Texas 75019 / Tel: (888) 778-2733 / FAX: (888) 329-9773 / www.crouzet-usa.com